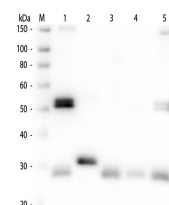


## Product Datasheet

### RAT IgG (H&L) (SHEEP) Antibody Peroxidase Conjugated GRP5190

<b>Description</b>	Anti-RAT IgG (H&L) (SHEEP) Antibody Peroxidase Conjugated
<b>Species/Host</b>	Sheep
<b>Conjugation</b>	HRP
<b>Tested Applications</b>	ELISA, IHC-P, WB
<b>Form/Appearance</b>	0.02 M Potassium Phosphate, 0.15 M Sodium Chloride, pH 7.2
<b>Concentration</b>	2.0 mg/mL
<b>Note</b>	For research use only.
<b>Isotype</b>	IgG
<b>Clonality</b>	Polyclonal
<b>Purity</b>	This product was prepared from monospecific antiserum by immunoaffinity chromatography using Rat IgG coupled to agarose. Assay by immunoelectrophoresis resulted in a single precipitin arc against anti-Peroxidase, anti-Sheep Serum, Rat IgG and Rat Serum.
<b>Source</b>	Rat IgG whole molecule
<b>Dilution Range</b>	ELISA: 1:60,000 - 1:100,000, Immunochemistry: 1:500 - 1:2,500, Western Blot: 1:1,000 - 1:10,000



Western Blot of Anti-Rat IgG (H&L) (SHEEP) Antibody