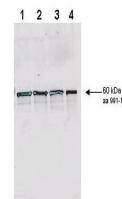


Product Datasheet

Rad9 S1129 Yeast (pan reactive) (RABBIT) Antibody GRP3380

Description	Anti-Rad9 S1129 Yeast (pan reactive) (RABBIT) Antibody
Species/Host	Rabbit
Reactivity	Fungi
Conjugation	Unconjugated
Tested Applications	ELISA, WB
Form/Appearance	0.02 M Potassium Phosphate, 0.15 M Sodium Chloride, pH 7.2
Concentration	1.0 mg/mL
Note	For research use only.
Isotype	IgG
Clonality	Polyclonal
Source	This affinity purified antibody was prepared from whole rabbit serum produced by repeated immunizations with a synthetic peptide corresponding to an internal region near aa 1120-1145 from the aa1309 yeast Rad9 protein conjugated to KLH.
Uniprot ID	P14737
Entrez	https://www.ncbi.nlm.nih.gov/gene//851803
Dilution Range	ELISA: 1:5,000,Western Blot: 1:100-1:500



Anti-Rad9 Antibody -
Western
Blot