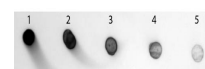


Product Datasheet

RABBIT IgG F(c) (GOAT) Antibody Alkaline Phosphatase Conjugated (Min X Human Serum Proteins) GRP5000

Description	Anti-RABBIT IgG F(c) (GOAT) Antibody Alkaline Phosphatase Conjugated (Min X Human Serum Proteins)
Species/Host	Goat
Reactivity	Rabbit
Conjugation	AP
Tested Applications	ELISA, IHC-P, WB
Form/Appearance	0.05 M Tris Chloride, 0.15M Sodium Chloride, 0.001M Magnesium Chloride, 0.0001M Zinc Chloride, 50% (v/v) Glycerol; pH 8.0
Concentration	1.0 mg/mL
Storage	Store vial at 4 °C before opening. DO NOT FREEZE. This product is stable at 4 °C as an undiluted liquid. Dilute only prior to immediate use. Freezing alkaline phosphatase conjugates will result in a substantial loss of enzymatic activity.
Note	For research use only.
Isotype	IgG
Clonality	Polyclonal
Source	Rabbit IgG F(c) fragment
Dilution Range	ELISA: 1:2,000 - 1:10,000, Immunochemistry: 1:200 - 1:1,000, Western Blot: 1:500 - 1:2,500
Application Notes	This product has been assayed against 1.0 µg of Rabbit IgG in a standard capture ELISA using pNPP p-nitrophenyl phosphate as a substrate for 30 minutes at room temperature. A working dilution of 1:3,000 to 1:15,000 is suggested for this product.



Rabbit IgG Fc Antibody
(Min X
Human) Alkaline
Phosphatase
Conjugated - Dot Blot