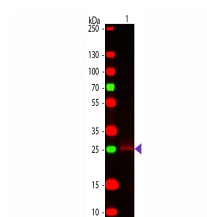


Product Datasheet

RABBIT IgG F(c) (GOAT) Antibody GRP4971

Description	Anti-RABBIT IgG F(c) (GOAT) Antibody
Species/Host	Goat
Reactivity	Rabbit
Conjugation	Unconjugated
Tested Applications	ELISA, IHC-P, WB
Form/Appearance	0.02 M Potassium Phosphate, 0.15 M Sodium Chloride, pH 7.2
Concentration	1.99mg/mL
Note	For research use only.
Isotype	IgG
Clonality	Polyclonal
Source	Anti-Rabbit IgG was produced by repeated immunization with rabbit IgG f(c) fragment in goat
Dilution Range	ELISA: 1:20,000 - 1:100,000, Immunochemistry: 1:1,000 - 1:5,000, Western Blot: 1:2,000 - 1:10,000
Application Notes	Antibody Anti-Rabbit IgG F(c) is suitable for immunoblotting (western or dot blot), ELISA, and immunohistochemistry as well as other peroxidase-antibody based enzymatic assays requiring lot-to-lot consistency.



WB - Rabbit IgG F(c)
Antibody