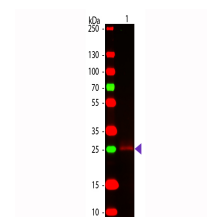


## Product Datasheet

### RABBIT IgG F(c) (GOAT) Antibody GRP4971

<b>Description</b>	Anti-RABBIT IgG F(c) (GOAT) Antibody
<b>Species/Host</b>	Goat
<b>Reactivity</b>	Rabbit
<b>Conjugation</b>	Unconjugated
<b>Tested Applications</b>	ELISA, IHC-P, WB
<b>Form/Appearance</b>	0.02 M Potassium Phosphate, 0.15 M Sodium Chloride, pH 7.2
<b>Concentration</b>	1.99mg/mL
<b>Note</b>	For research use only.
<b>Isotype</b>	IgG
<b>Clonality</b>	Polyclonal
<b>Source</b>	Anti-Rabbit IgG was produced by repeated immunization with rabbit IgG f(c) fragment in goat
<b>Dilution Range</b>	ELISA: 1:20,000 - 1:100,000, Immunochemistry: 1:1,000 - 1:5,000, Western Blot: 1:2,000 - 1:10,000
<b>Application Notes</b>	Antibody Anti-Rabbit IgG F(c) is suitable for immunoblotting (western or dot blot), ELISA, and immunohistochemistry as well as other peroxidase-antibody based enzymatic assays requiring lot-to-lot consistency.



WB - Rabbit IgG F(c)  
Antibody