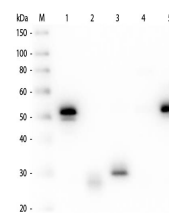


## Product Datasheet

### RABBIT IgG (H&L) (MOUSE) Antibody (Min X Hu, Gt, Ms Serum Proteins) GRP5032

<b>Description</b>	Anti-RABBIT IgG (H&L) (MOUSE) Antibody (Min X Hu, Gt, Ms Serum Proteins)
<b>Species/Host</b>	Mouse
<b>Reactivity</b>	Rabbit
<b>Conjugation</b>	Unconjugated
<b>Tested Applications</b>	ELISA, IHC-P, WB
<b>Form/Appearance</b>	0.02 M Potassium Phosphate, 0.15 M Sodium Chloride, pH 7.2
<b>Concentration</b>	1.1 mg/mL
<b>Note</b>	For research use only.
<b>Isotype</b>	IgG
<b>Clonality</b>	Polyclonal
<b>Source</b>	Anti-Rabbit IgG (H&L) was produced by repeated immunization with rabbit whole IgG molecule in mouse.
<b>Dilution Range</b>	ELISA: 1:65,000, Immunochemistry: 1:1,000 - 1:5,000, Western Blot: 1:3,000 - 1:30,000
<b>Application Notes</b>	Anti-Rabbit IgG (H&L) is suitable for use in immunoelectrophoresis, western-blot, competitive western-blot, ELISA and competitive ELISA assays. Specific conditions for reactivity and signal detection should be optimized by the end user.



Western Blot of Anti-Rabbit IgG (H&L) (MOUSE) Antibody (Min X Hu, Gt, Ms Serum Proteins)