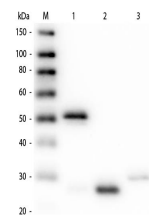


## Product Datasheet

# RABBIT IgG (H&L) (GUINEA PIG) Antibody Rhodamine Conjugated (Min X Hu, Gt, Ms Serum Proteins) GRP5025

|                            |  |
|----------------------------|--|
| <b>Description</b>         | Anti-RABBIT IgG (H&L) (GUINEA PIG) Antibody Rhodamine Conjugated (Min X Hu, Gt, Ms Serum Proteins)               |
| <b>Species/Host</b>        | Guinea Pig   |
| <b>Reactivity</b>          | Rabbit   |
| <b>Conjugation</b>         | Rhodamine (TRITC)  |
| <b>Tested Applications</b> | FC, IF, IHC-P  |
| <b>Form/Appearance</b>     | 0.02 M Potassium Phosphate, 0.15 M Sodium Chloride, pH 7.2   |
| <b>Concentration</b>       | 1.0 mg/mL  |
| <b>Note</b>                | For research use only.   |
| <b>Isotype</b>             | IgG  |
| <b>Clonality</b>           | Polyclonal   |
| <b>Source</b>              | Rabbit IgG whole molecule  |
| <b>Dilution Range</b>      | FLISA: 1:10,000 - 1:50,000, Flow Cytometry: 1:500 - 1:2,500, Fluorochrome: 2.3, IF Microscopy: 1:1,000 - 1:5,000 |



Western Blot of Anti-Rabbit IgG (H&L) (GUINEA PIG) Antibody (Min X Hu, Gt, Ms Serum Proteins)