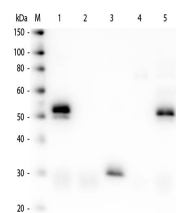


## Product Datasheet

# RABBIT IgG (H&L) (DONKEY) Antibody Alkaline Phosphatase Conjugated (Min X Bv Ch Gt GP Ham Hs Hu Ms Rt & Sh Serum Proteins) GRP5069

|                            |  |
|----------------------------|--|
| <b>Description</b>         | Anti-RABBIT IgG (H&L) (DONKEY) Antibody Alkaline Phosphatase Conjugated (Min X Bv Ch Gt GP Ham Hs Hu Ms Rt & Sh Serum Proteins)  |
| <b>Species/Host</b>        | Donkey   |
| <b>Reactivity</b>          | Rabbit   |
| <b>Conjugation</b>         | AP   |
| <b>Tested Applications</b> | ELISA, IHC-P, WB   |
| <b>Form/Appearance</b>     | 0.05 M Tris Chloride, 0.15M Sodium Chloride, 0.001M Magnesium Chloride, 0.0001M Zinc Chloride, 50% (v/v) Glycerol; pH 8.0  |
| <b>Concentration</b>       | 1.0 mg/mL  |
| <b>Storage</b>             | Store vial at 4 °C before opening. DO NOT FREEZE. This product is stable at 4 °C as an undiluted liquid. Dilute only prior to immediate use. Freezing alkaline phosphatase conjugates will result in a substantial loss of enzymatic activity. |
| <b>Note</b>                | For research use only.   |
| <b>Isotype</b>             | IgG  |
| <b>Clonality</b>           | Polyclonal   |
| <b>Source</b>              | Anti-Rabbit IgG (H&L) was produced by repeated immunization with Rabbit IgG whole molecule in donkey   |
| <b>Dilution Range</b>      | ELISA: 1:10,000 - 1:20,000, Immunochemistry: 1:400 - 1:2,000, Western Blot: 1:1,000 - 1:5,000  |
| <b>Application Notes</b>   | Antibody Anti-Rabbit IgG (H&L) is suitable for immunoblotting (western or dot blot), ELISA, and immunohistochemistry assays requiring lot-to-lot consistency.  |



Western Blot of Anti-Rabbit IgG (H&L) (DONKEY) Antibody (Min X Bv Ch Gt GP Ham Hs Hu Ms Rt & Sh Serum Proteins)