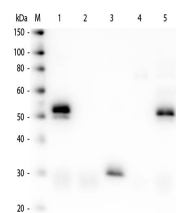


## Product Datasheet

# RABBIT IgG (H&L) (DONKEY) Antibody Alkaline Phosphatase Conjugated (Min X Bv Ch Gt GP Ham Hs Hu Ms Rt & Sh Serum Proteins) GRP5069

<b>Description</b>	Anti-RABBIT IgG (H&L) (DONKEY) Antibody Alkaline Phosphatase Conjugated (Min X Bv Ch Gt GP Ham Hs Hu Ms Rt & Sh Serum Proteins)
<b>Species/Host</b>	Donkey
<b>Reactivity</b>	Rabbit
<b>Conjugation</b>	AP
<b>Tested Applications</b>	ELISA, IHC-P, WB
<b>Form/Appearance</b>	0.05 M Tris Chloride, 0.15M Sodium Chloride, 0.001M Magnesium Chloride, 0.0001M Zinc Chloride, 50% (v/v) Glycerol; pH 8.0
<b>Concentration</b>	1.0 mg/mL
<b>Storage</b>	Store vial at 4 °C before opening. DO NOT FREEZE. This product is stable at 4 °C as an undiluted liquid. Dilute only prior to immediate use. Freezing alkaline phosphatase conjugates will result in a substantial loss of enzymatic activity.
<b>Note</b>	For research use only.
<b>Isotype</b>	IgG
<b>Clonality</b>	Polyclonal
<b>Source</b>	Anti-Rabbit IgG (H&L) was produced by repeated immunization with Rabbit IgG whole molecule in donkey
<b>Dilution Range</b>	ELISA: 1:10,000 - 1:20,000, Immunochemistry: 1:400 - 1:2,000, Western Blot: 1:1,000 - 1:5,000
<b>Application Notes</b>	Antibody Anti-Rabbit IgG (H&L) is suitable for immunoblotting (western or dot blot), ELISA, and immunohistochemistry assays requiring lot-to-lot consistency.



Western Blot of Anti-Rabbit IgG (H&L) (DONKEY) Antibody (Min X Bv Ch Gt GP Ham Hs Hu Ms Rt & Sh Serum Proteins)