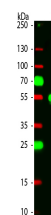


Product Datasheet

RABBIT IgG (H&L) (CHICKEN) Antibody Rhodamine Conjugated GRP5080

Description	Anti-RABBIT IgG (H&L) (CHICKEN) Antibody Rhodamine Conjugated
Species/Host	Chicken
Conjugation	Rhodamine (TRITC)
Tested Applications	FC, IF, IHC-P
Form/Appearance	0.02 M Potassium Phosphate, 0.15 M Sodium Chloride, pH 7.2
Concentration	1.0 mg/mL
Note	For research use only.
Isotype	IgG
Clonality	Polyclonal
Source	Rabbit IgG whole molecule
Dilution Range	FLISA: 1:10,000 - 1:50,000, Flow Cytometry: 1:500 - 1:2,500, Fluorochrome: 3.7, IF Microscopy: 1:1,000 - 1:5,000



WB - Rabbit IgG (H&L) Antibody Rhodamine Conjugated