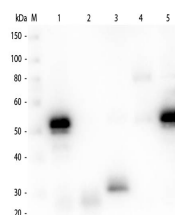


Product Datasheet

RABBIT IgG (H&L) (CHICKEN) Antibody Peroxidase Conjugated GRP5083

Description	Anti-RABBIT IgG (H&L) (CHICKEN) Antibody Peroxidase Conjugated
Species/Host	Chicken
Reactivity	Rabbit
Conjugation	HRP
Tested Applications	ELISA, IHC-P, WB
Form/Appearance	0.02 M Potassium Phosphate, 0.15 M Sodium Chloride, pH 7.2
Concentration	1.0 mg/mL
Note	For research use only.
Isotype	IgG
Clonality	Polyclonal
Source	Anti-Rabbit IgG whole molecule was produced by repeated immunization with Rabbit IgG whole molecule in chicken.
Dilution Range	ELISA: 1:140,000, Immunochemistry: 1:1,000 - 1:5,000, Western Blot: 1:2,000 - 1:10,000
Application Notes	Anti-Rabbit IgG whole molecule is suitable for use in immunoelectrophoresis, western-blot, competitive western-blot, ELISA and competitive ELISA assays. Specific conditions for reactivity and signal detection should be optimized by the end user.



Western Blot of Anti-Rabbit IgG (H&L) (CHICKEN) Antibody