

Product Datasheet

Protein Kinase C delta-Binding Protein (RABBIT) Antibody GRP3876

Description Anti-Protein Kinase C delta-Binding Protein (RABBIT) Antibody

Species/Host Rabbit

Reactivity Human

Conjugation Unconjugated

Tested Applications ELISA, IHC-P, WB

Form/Appearance 0.02 M Potassium Phosphate, 0.15 M Sodium Chloride, pH 7.2

Concentration 1.02 mg/mL

Note For research use only.

Isotype IgG

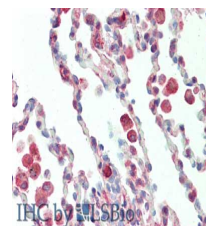
Clonality Polyclonal

Source Protein Kinase C delta-Binding Protein affinity purified antibody was prepared from whole rabbit serum produced by repeated immunizations with a synthetic peptide corresponding to the C-terminal region of human Protein Kinase C delta-Binding Protein.

Uniprot ID **Q969G5**

Entrez <https://www.ncbi.nlm.nih.gov/gene/112464>

Dilution Range ELISA: 1: 10,000, Immunochemistry: 5 µg /mL, Western Blot: 1ug/ml



Immunohistochemistry of
rabbit
anti-Protein Kinase C delta
Binding Protein antibody