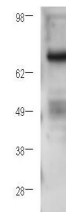


Product Datasheet

Protein Kinase C beta (RABBIT) Antibody GRP3619

Description	Anti-Protein Kinase C beta (RABBIT) Antibody
Species/Host	Rabbit
Reactivity	Human
Conjugation	Unconjugated
Tested Applications	ELISA, WB
Form/Appearance	0.02 M Potassium Phosphate, 0.15 M Sodium Chloride, pH 7.2
Concentration	1.0 mg/mL
Note	For research use only.
Isotype	IgG
Clonality	Polyclonal
Source	This affinity purified antibody was prepared from whole rabbit serum produced by repeated immunizations with a synthetic peptide corresponding to an internal region of human Protein kinase C beta.
Uniprot ID	P05771
Entrez	https://www.ncbi.nlm.nih.gov/gene//5579
Dilution Range	ELISA: 1:75,000 - 1:80,000, Western Blot: 1:1,000 - 1:2,000



Anti-PKC Beta Antibody -
Western Blot