

Product Datasheet

beta 2 Adrenergic Receptor antibody [C2C3], C-term GRP92

Description

This gene encodes beta-2-adrenergic receptor which is a member of the G protein-coupled receptor superfamily. This receptor is directly associated with one of its ultimate effectors, the class C L-type calcium channel Ca(V)1.2. This receptor-channel complex also contains a G protein, an adenylyl cyclase, cAMP-dependent kinase, and the counterbalancing phosphatase, PP2A. The assembly of the signaling complex provides a mechanism that ensures specific and rapid signaling by this G protein-coupled receptor. This gene is intronless. Different polymorphic forms, point mutations, and/or downregulation of this gene are associated with nocturnal asthma, obesity and type 2 diabetes. [provided by RefSeq]

Species/Host

Rabbit

Reactivity

Human, Rat

Conjugation

Unconjugated

Tested Applications

IHC-P, WB

Immunogen

Carrier-protein conjugated synthetic peptide encompassing a sequence within the C-terminus region of human beta 2 Adrenergic Receptor. The exact sequence is proprietary.

Form/Appearance

Liquid: 1XPBS, 20% Glycerol (pH7). 0.01% Thimerosal was added as a preservative.

Concentration

1 mg/ml

Storage

Store as concentrated solution. Centrifuge briefly prior to opening vial. For short-term storage (1-2 weeks), store at 4°C. For long-term storage, aliquot and store at -20°C or below. Avoid multiple freeze-thaw cycles.

Note

For research use only.

Isotype

IgG

Clonality

Polyclonal

Purity

Purified by antigen-affinity chromatography.

Uniprot ID

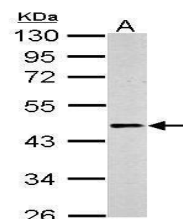
P07550

Entrez

154

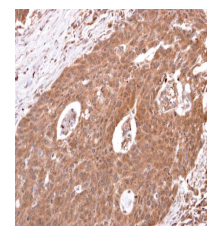
Dilution Range

WB: 1:500-1:3000, IHC-P: 1:100-1:1000



Sample (30 µg of whole cell lysate) A: PC-12 10% SDS PAGE GRP544 diluted at 1:500

The HRP-conjugated anti-rabbit IgG antibody was used to detect the primary antibody.



beta 2 Adrenergic Receptor antibody [C2C3], C-term detects beta 2 Adrenergic Receptor protein at cytosol on human colon carcinoma by immunohistochemical analysis.

Sample: beta 2 Adrenergic Receptor antibody [C2C3], C-term (GRP544) dilution: 1:250.