

## Product Datasheet

### PROTEIN A (GOAT) Antibody GRP1811

**Description** Protein A is 56 kDA surface protein found in the cell wall of Staphylococcus aureus. Protein A has a high affinity to Human IgG, Mouse IgG and others and is therefore suitable for purification and detection of immunoglobulins.

**Species/Host** Goat

**Conjugation** Unconjugated

**Tested Applications** ELISA, IP, WB

**Form/Appearance** 0.02 M Potassium Phosphate, 0.15 M Sodium Chloride, pH 7.2

**Concentration** 1.0 mg/mL

**Note** For research use only.

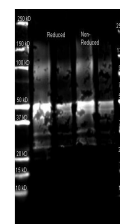
**Isotype** IgG

**Clonality** Polyclonal

**Source** Protein A [Staphylococcus aureus]

**Dilution Range** ELISA: 1:20,000 - 1:100,000, Immunoprecipitation: 1:1,000 - 1:5,000, Western Blot: 1:2,000 - 1:10,000

**Application Notes** Suitable for western blot, immunoprecipitation, immunodiffusion, conjugation and most immunological methods requiring high titer and specificity.



Anti Protein A Polyclonal  
Antibody-Western blot