

Product Datasheet

PROTEIN A (GOAT) Antibody GRP1810

Description Protein A is 56 kDA surface protein found in the cell wall of Staphylococcus aureus. Protein A has a high affinity to Human IgG, Mouse IgG and others and is therefore suitable for purification and detection of immunoglobulins.

Species/Host Goat

Conjugation Unconjugated

Tested Applications ELISA, IP, WB

Form/Appearance 0.02 M Potassium Phosphate, 0.15 M Sodium Chloride, pH 7.2

Concentration 1.0 mg/mL

Note For research use only.

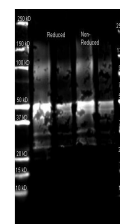
Isotype IgG

Clonality Polyclonal

Source Protein A [Staphylococcus aureus]

Dilution Range ELISA: 1:20,000 - 1:100,000, Immunoprecipitation: 1:1,000 - 1:5,000, Western Blot: 1:2,000 - 1:10,000

Application Notes Suitable for western blot, immunoprecipitation, immunodiffusion, conjugation and most immunological methods requiring high titer and specificity.



Anti Protein A Polyclonal
Antibody-Western blot