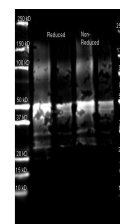


Product Datasheet

PROTEIN A (GOAT) Antibody GRP1481

Description	Protein A is 56 kDA surface protein found in the cell wall of Staphylococcus aureus. Protein A has a high affinity to Human IgG, Mouse IgG and others and is therefore suitable for purification and detection of immunoglobulins.
Species/Host	Goat
Conjugation	Unconjugated
Tested Applications	ELISA, IHC-P, WB
Form/Appearance	0.01 M Sodium Phosphate, 0.15 M Sodium Chloride, pH 7.2
Concentration	90 mg/mL
Note	For research use only.
Isotype	Antiserum
Clonality	Polyclonal
Purity	This product was prepared from monospecific antiserum by a delipidation and defibrination. Assay by immunoelectrophoresis resulted in a single precipitin arc against anti-goat serum, purified and partially purified Protein A [Staphylococcus aureus].
Source	Protein A [Staphylococcus aureus]
Dilution Range	ELISA: 1:20,000-1:100,000, Immunochemistry: 1:1,000-1:5,000, Western Blot: 1:2,000-1:10,000
Application Notes	Suitable for immunoblotting (western or dot blot), ELISA, immunoprecipitation and most immunological methods requiring high titer and specificity.



Anti Protein A Polyclonal
Antibody-Western blot