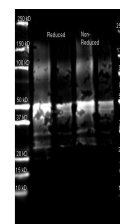


## Product Datasheet

### PROTEIN A (GOAT) Antibody GRP1481

<b>Description</b>	Protein A is 56 kDA surface protein found in the cell wall of Staphylococcus aureus. Protein A has a high affinity to Human IgG, Mouse IgG and others and is therefore suitable for purification and detection of immunoglobulins.
<b>Species/Host</b>	Goat
<b>Conjugation</b>	Unconjugated
<b>Tested Applications</b>	ELISA, IHC-P, WB
<b>Form/Appearance</b>	0.01 M Sodium Phosphate, 0.15 M Sodium Chloride, pH 7.2
<b>Concentration</b>	90 mg/mL
<b>Note</b>	For research use only.
<b>Isotype</b>	Antiserum
<b>Clonality</b>	Polyclonal
<b>Purity</b>	This product was prepared from monospecific antiserum by a delipidation and defibrination. Assay by immunoelectrophoresis resulted in a single precipitin arc against anti-goat serum, purified and partially purified Protein A [Staphylococcus aureus].
<b>Source</b>	Protein A [Staphylococcus aureus]
<b>Dilution Range</b>	ELISA: 1:20,000-1:100,000, Immunochemistry: 1:1,000-1:5,000, Western Blot: 1:2,000-1:10,000
<b>Application Notes</b>	Suitable for immunoblotting (western or dot blot), ELISA, immunoprecipitation and most immunological methods requiring high titer and specificity.



Anti Protein A Polyclonal Antibody-Western blot