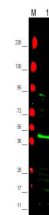


Product Datasheet

PPAR gamma 2 (N-terminal specific) (RABBIT) Antibody GRP3404

Description	Anti-PPAR gamma 2 (N-terminal specific) (RABBIT) Antibody
Species/Host	Rabbit
Reactivity	Mouse
Conjugation	Unconjugated
Tested Applications	ELISA, WB
Form/Appearance	0.02 M Potassium Phosphate, 0.15 M Sodium Chloride, pH 7.2
Concentration	1.0 mg/mL
Note	For research use only.
Isotype	IgG
Clonality	Polyclonal
Source	This affinity purified antibody was prepared from whole rabbit serum produced by repeated immunizations with a synthetic peptide corresponding to a region near the amino terminus of human PPAR gamma 2.
Uniprot ID	P37231
Entrez	https://www.ncbi.nlm.nih.gov/gene//5468
Dilution Range	ELISA: 1:4,000 - 1:40,000, Western Blot: 1:1,000 - 1:3,000



Anti-PPAR2 Antibody -
Western
Blot