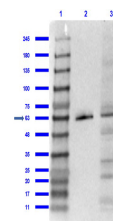


## Product Datasheet

### PPAR gamma 1 and 2 (internal) (RABBIT) Antibody GRP3405

<b>Description</b>	Anti-PPAR gamma 1 and 2 (internal) (RABBIT) Antibody
<b>Species/Host</b>	Rabbit
<b>Reactivity</b>	Human, Mouse, Rat, Rabbit, Dog, Guinea Pig, Squirrel, Primate, Hamster, Boar
<b>Conjugation</b>	Unconjugated
<b>Tested Applications</b>	ELISA, WB
<b>Form/Appearance</b>	0.02 M Potassium Phosphate, 0.15 M Sodium Chloride, pH 7.2
<b>Concentration</b>	1.1 mg/mL
<b>Note</b>	For research use only.
<b>Isotype</b>	IgG
<b>Clonality</b>	Polyclonal
<b>Source</b>	This affinity purified antibody was prepared from whole rabbit serum produced by repeated immunizations with a synthetic peptide corresponding to an internal region near amino acids 250-300 of human PPAR gamma isoform 1.
<b>Uniprot ID</b>	<b>P37231</b>
<b>Entrez</b>	<a href="https://www.ncbi.nlm.nih.gov/gene//5468">https://www.ncbi.nlm.nih.gov/gene//5468</a>
<b>Dilution Range</b>	ELISA: 1:8,000 - 1:32,000, Western Blot: User optimized
<b>Application Notes</b>	This affinity-purified antibody has been tested for use in ELISA. Specific conditions for reactivity should be optimized by the end user.



Western Blot of Rabbit Anti-PPAR gamma 1&2 Antibody