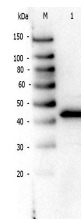


## Product Datasheet

### PPAR alpha (N-terminal specific) (RABBIT) Antibody GRP3408

<b>Description</b>	Anti-PPAR alpha (N-terminal specific) (RABBIT) Antibody
<b>Species/Host</b>	Rabbit
<b>Reactivity</b>	Human, Mouse
<b>Conjugation</b>	Unconjugated
<b>Tested Applications</b>	ELISA, FC, IHC-P, WB
<b>Form/Appearance</b>	0.02 M Potassium Phosphate, 0.15 M Sodium Chloride, pH 7.2
<b>Concentration</b>	1.0 mg/mL
<b>Note</b>	For research use only.
<b>Isotype</b>	IgG
<b>Clonality</b>	Polyclonal
<b>Source</b>	PPAR alpha Antibody was prepared from whole rabbit serum produced by repeated immunizations with a synthetic peptide corresponding to a N-Terminal region near amino acids 1-25 of mouse PPAR alpha.
<b>Uniprot ID</b>	<b>P23204</b>
<b>Entrez</b>	<a href="https://www.ncbi.nlm.nih.gov/gene//19013">https://www.ncbi.nlm.nih.gov/gene//19013</a>
<b>Dilution Range</b>	ELISA: 1:8,000 - 1:32,000, Flow Cytometry: User Optimized, Immunochemistry: 1:100-1:300, Western Blot: 1:500 - 1:2,000



Rabbit anti-PPAR Alpha  
WB