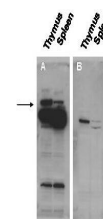


Product Datasheet

Pogz (RABBIT) Antibody GRP3623

Description	Anti-Pogz (RABBIT) Antibody
Species/Host	Rabbit
Reactivity	Mouse
Conjugation	Unconjugated
Tested Applications	ELISA, WB
Form/Appearance	0.02 M Potassium Phosphate, 0.15 M Sodium Chloride, pH 7.2
Concentration	1.6 mg/mL
Note	For research use only.
Isotype	IgG
Clonality	Polyclonal
Source	This affinity purified antibody was prepared from whole rabbit serum produced by repeated immunizations with a synthetic peptide corresponding to a region near the N-terminus of mouse Pogz protein.
Uniprot ID	Q8BZH4
Entrez	https://www.ncbi.nlm.nih.gov/gene//229584
Dilution Range	ELISA: 1:150,000, Western Blot: 1:3,000



Anti-Pogz Antibody -
Western
Blot