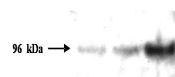


Product Datasheet

PMS2 (MOUSE) Monoclonal Antibody GRP2070

Description	Anti-PMS2 (MOUSE) Monoclonal Antibody
Species/Host	Mouse
Reactivity	Human
Conjugation	Unconjugated
Tested Applications	ELISA, WB
Form/Appearance	0.02 M Potassium Phosphate, 0.15 M Sodium Chloride, pH 7.2
Concentration	1.0 mg/mL
Note	For research use only.
Isotype	IgG1
Clonality	Monoclonal
Source	This protein A purified monoclonal antibody was produced by repeated immunizations with recombinant human PMS2 corresponding to the first 133 amino acid residues of the protein. The clone was produced using conventional hybridoma technology.
Clone ID	1204
Uniprot ID	P54278
Entrez	https://www.ncbi.nlm.nih.gov/gene/5395
Dilution Range	ELISA: 1:5,000 - 1:20,000, Western Blot: 1:500 - 1:2,000



Anti-PMS2 Antibody -
Western
Blot