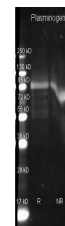


Product Datasheet

PLASMINOGEN (Human Plasma) (GOAT) Antibody Biotin Conjugated GRP1940

| | |
|----------------------------|---|
| Species/Host | Goat |
| Reactivity | Human |
| Conjugation | Biotin |
| Tested Applications | ELISA, WB |
| Form/Appearance | 0.02 M Potassium Phosphate, 0.15 M Sodium Chloride, pH 7.2 |
| Concentration | 1.0 mg/mL |
| Note | For research use only. |
| Isotype | IgG |
| Clonality | Polyclonal |
| Source | Plasminogen [Human Plasma] |
| Uniprot ID | P00747 |
| Entrez | https://www.ncbi.nlm.nih.gov/gene//5340 |
| Dilution Range | ELISA: 1:2,000 - 1:10,000, Western Blot: 1:500 - 1:2,500 |



Plasminogen Polyclonal
Antibody-Western blot