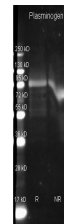


## Product Datasheet

# PLASMINOGEN (Human Plasma) (GOAT) Antibody Biotin Conjugated GRP1939

<b>Species/Host</b>	Goat
<b>Reactivity</b>	Human
<b>Conjugation</b>	Biotin
<b>Tested Applications</b>	ELISA, WB
<b>Form/Appearance</b>	0.02 M Potassium Phosphate, 0.15 M Sodium Chloride, pH 7.2
<b>Concentration</b>	1.0 mg/mL
<b>Note</b>	For research use only.
<b>Isotype</b>	IgG
<b>Clonality</b>	Polyclonal
<b>Source</b>	Plasminogen [Human Plasma]
<b>Uniprot ID</b>	<b>P00747</b>
<b>Entrez</b>	<a href="https://www.ncbi.nlm.nih.gov/gene//5340">https://www.ncbi.nlm.nih.gov/gene//5340</a>
<b>Dilution Range</b>	ELISA: 1:2,000 - 1:10,000, Western Blot: 1:500 - 1:2,500



Plasminogen Polyclonal  
Antibody-Western blot