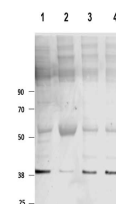


Product Datasheet

PKM2 (RABBIT) Antibody GRP3775

| | |
|----------------------------|--|
| Description | Anti-PKM2 (RABBIT) Antibody |
| Species/Host | Rabbit |
| Reactivity | Human |
| Conjugation | Unconjugated |
| Tested Applications | ELISA, WB |
| Form/Appearance | 0.02 M Potassium Phosphate, 0.15 M Sodium Chloride, pH 7.2 |
| Concentration | 1.0 mg/ml |
| Note | For research use only. |
| Isotype | IgG |
| Clonality | Polyclonal |
| Source | Affinity purified Anti-PKM2 antibody was prepared from whole rabbit serum produced by repeated immunizations with a synthetic peptide near the internal portion of human PKM2 protein. |
| Uniprot ID | P14618 |
| Entrez | https://www.ncbi.nlm.nih.gov/gene//5315 |
| Dilution Range | ELISA: 5 ug/ml, Western Blot: 1 ug/ml |



Western blot of Anti-PKM2