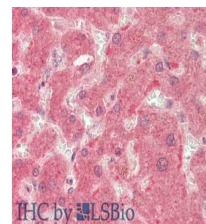


Product Datasheet

PI4K beta (RABBIT) Antibody GRP3928

| | |
|----------------------------|---|
| Description | Anti-PI4K beta (RABBIT) Antibody |
| Species/Host | Rabbit |
| Reactivity | Human |
| Conjugation | Unconjugated |
| Tested Applications | ELISA, IHC-P, WB |
| Form/Appearance | 0.02 M Potassium Phosphate, 0.15 M Sodium Chloride, pH 7.2 |
| Concentration | 1.0 mg/mL |
| Note | For research use only. |
| Isotype | IgG |
| Clonality | Polyclonal |
| Source | Anti-PI4K beta affinity purified antibody was prepared from whole rabbit serum produced by repeated immunizations with a synthetic peptide corresponding to an internal region of human PI4K beta protein. |
| Uniprot ID | Q9UBF8 |
| Dilution Range | ELISA: 1:10,000, Immunochemistry: 5 µg /mL, Western Blot: 1ug/ml |
| Application Notes | Anti-PI4K beta antibody is useful for ELISA, IHC, and Western Blot. Specific conditions for reactivity should be optimized by the end user. Expect a band approximately ~91.4kDa corresponding to the appropriate cell lysate or extract. |



Immunohistochemistry of
anti-PIK4CB / PI4KB
antibody