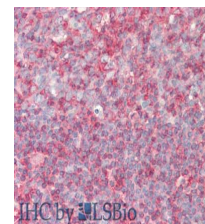


Product Datasheet

PI4K alpha, type I (RABBIT) Antibody GRP3927

Description	Anti-PI4K alpha, type I (RABBIT) Antibody
Species/Host	Rabbit
Reactivity	Human
Conjugation	Unconjugated
Tested Applications	ELISA, IHC-P, WB
Form/Appearance	0.02 M Potassium Phosphate, 0.15 M Sodium Chloride, pH 7.2
Concentration	0.75 mg/mL
Note	For research use only.
Isotype	IgG
Clonality	Polyclonal
Source	Anti-PI4K, type I alpha affinity purified antibody was prepared from whole rabbit serum produced by repeated immunizations with a synthetic peptide corresponding to an internal region of human PI4K, type I alpha protein.
Uniprot ID	Q99755
Dilution Range	ELISA: 1: 10,000,Immunochemistry: 5 µg /mL,Western Blot: 1ug/ml

Application Notes Anti-PI4K alpha antibody is useful for ELISA, IHC, and Western Blot. Specific conditions for reactivity should be optimized by the end user. Expect a band approximately ~62.6kDa corresponding to the appropriate cell lysate or extract.



IHC by LSBio
Immunohistochemistry of
Rabbit
anti-PIP5K1A antibody.