

Product Datasheet

PHOSPHO ENOL PYRUVATE CARBOXYLASE (RABBIT) Antibody GRP2519

Description Anti-PHOSPHO ENOL PYRUVATE CARBOXYLASE (RABBIT) Antibody

Species/Host Rabbit

Reactivity Plant

Conjugation Unconjugated

Tested Applications ELISA, IHC-P, WB

Form/Appearance 0.02 M Potassium Phosphate, 0.15 M Sodium Chloride, pH 7.2

Concentration 1.0 mg/ml

Note For research use only.

Isotype IgG

Clonality Polyclonal

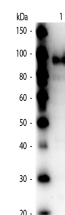
Source Anti-Phospho Enol Pyruvate Carboxylase Antibody was produced by repeated immunizations with maize leaves Phospho-enol-pyruvate Carboxylase.

Uniprot ID **B8XPZ2**

Entrez <https://www.ncbi.nlm.nih.gov/gene//542372>

Dilution Range ELISA: 1:10,000 - 1:40,000, Immunochemistry: User Optimized, Western Blot: 1:1,000 - 1:4,000

Application Notes Anti-Phospho Enol Pyruvate Carboxylase antibody is suitable for western blotting, IHC and for ELISA. Researchers should determine optimal titers for applications that are not stated below.



WB - Phospho Enol Pyruvate Carboxylase Antibody