

## Product Datasheet

# PHOSPHO ENOL PYRUVATE CARBOXYLASE (RABBIT) Antibody GRP2518

**Description** Anti-PHOSPHO ENOL PYRUVATE CARBOXYLASE (RABBIT) Antibody

**Species/Host** Rabbit

**Reactivity** Plant

**Conjugation** Unconjugated

**Tested Applications** ELISA, IHC-P, WB

**Form/Appearance** 0.02 M Potassium Phosphate, 0.15 M Sodium Chloride, pH 7.2

**Concentration** 1.0 mg/ml

**Note** For research use only.

**Isotype** IgG

**Clonality** Polyclonal

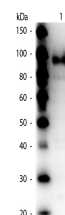
**Source** Anti-Phospho Enol Pyruvate Carboxylase Antibody was produced by repeated immunizations with maize leaves Phospho-enol-pyruvate Carboxylase.

**Uniprot ID** **B8XPZ2**

**Entrez** <https://www.ncbi.nlm.nih.gov/gene//542372>

**Dilution Range** ELISA: 1:10,000 - 1:40,000, Immunochemistry: User Optimized, Western Blot: 1:1,000 - 1:4,000

**Application Notes** Anti-Phospho Enol Pyruvate Carboxylase antibody is suitable for western blotting, IHC and for ELISA. Researchers should determine optimal titers for applications that are not stated below.



WB - Phospho Enol Pyruvate Carboxylase Antibody