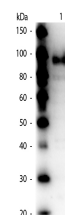


Product Datasheet

PHOSPHO ENOL PYRUVATE CARBOXYLASE (RABBIT) Antibody GRP2518

Description	Anti-PHOSPHO ENOL PYRUVATE CARBOXYLASE (RABBIT) Antibody
Species/Host	Rabbit
Reactivity	Plant
Conjugation	Unconjugated
Tested Applications	ELISA, IHC-P, WB
Form/Appearance	0.02 M Potassium Phosphate, 0.15 M Sodium Chloride, pH 7.2
Concentration	1.0 mg/ml
Note	For research use only.
Isotype	IgG
Clonality	Polyclonal
Source	Anti-Phospho Enol Pyruvate Carboxylase Antibody was produced by repeated immunizations with maize leaves Phospho-enol-pyruvate Carboxylase.
Uniprot ID	B8XPZ2
Entrez	https://www.ncbi.nlm.nih.gov/gene//542372
Dilution Range	ELISA: 1:10,000 - 1:40,000, Immunochemistry: User Optimized, Western Blot: 1:1,000 - 1:4,000

Application Notes Anti-Phospho Enol Pyruvate Carboxylase antibody is suitable for western blotting, IHC and for ELISA. Researchers should determine optimal titers for applications that are not stated below.



WB - Phospho Enol Pyruvate Carboxylase Antibody