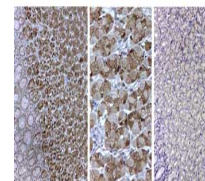


Product Datasheet

PEPSIN (GOAT) Antibody GRP1986

Description	Anti-PEPSIN (GOAT) Antibody
Species/Host	Goat
Reactivity	Pig
Conjugation	Unconjugated
Tested Applications	ELISA, IHC-P, IP, WB
Form/Appearance	0.02 M Potassium Phosphate, 0.15 M Sodium Chloride, pH 7.2
Concentration	1.0 mg/ml
Note	For research use only.
Isotype	IgG
Clonality	Polyclonal
Source	Anti-Pepsin Antibody was produced by repeated immunizations with pork Pepsin protein isolated from swine stomach.
Uniprot ID	P00791
Entrez	https://www.ncbi.nlm.nih.gov/gene//396892
Dilution Range	ELISA: 1:50:000 - 1:200,000,Immunochemistry: 1:2,000 - 1:10,000,Immunoprecipitation: 1:100,Western Blot: 1:5,000 - 1:20,000



Immunohistochemistry of
goat
anti-pepsin antibody

Application Notes Anti-Pepsin antibody is suitable for western blotting to detect a single band of the expected apparent molecular weight and for ELISA. Researchers should determine optimal titers for applications that are not stated below.