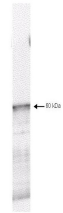


Product Datasheet

PDK1 (RABBIT) Antibody GRP3395

Description	Anti-PDK1 (RABBIT) Antibody
Species/Host	Rabbit
Reactivity	Human
Conjugation	Unconjugated
Tested Applications	ELISA, IHC-P, WB
Form/Appearance	0.02 M Potassium Phosphate, 0.15 M Sodium Chloride, pH 7.2
Concentration	1.3 mg/mL
Note	For research use only.
Isotype	IgG
Clonality	Polyclonal
Source	This affinity purified antibody was prepared from whole rabbit serum produced by repeated immunizations with a synthetic peptide corresponding to a region near the C-terminal of human PDK-1 protein.
Uniprot ID	Q15118
Entrez	https://www.ncbi.nlm.nih.gov/gene//5170
Dilution Range	ELISA: 1:100,000,Immunochemistry: User Optimized,Western Blot: 1:500 - 1:2,000



Anti-PDK-1 Antibody -
Western
Blot