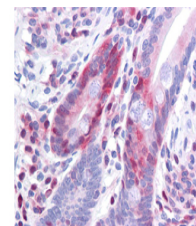


Product Datasheet

Pdcd4 pS457 (MOUSE) Monoclonal Antibody GRP2080

Description	Anti-Pdcd4 pS457 (MOUSE) Monoclonal Antibody
Species/Host	Mouse
Reactivity	Human, Mouse
Conjugation	Unconjugated
Tested Applications	ELISA, IHC-P, WB
Form/Appearance	0.02 M Potassium Phosphate, 0.15 M Sodium Chloride, pH 7.2
Concentration	1.0 mg/mL
Note	For research use only.
Isotype	IgG1
Clonality	Monoclonal
Source	This monoclonal antibody was produced by repeated immunizations with a synthetic peptide corresponding to residues surrounding Ser457 of the human Pdcd4 protein.
Clone ID	9G6
Uniprot ID	Q53EL6
Entrez	https://www.ncbi.nlm.nih.gov/gene//27250
Dilution Range	ELISA: 1:20,000 - 1:100,000, Immunochemistry: 1:1,000 - 1:5,000, Western Blot: 1:2,000 - 1:10,000
Application Notes	This monoclonal antibody is suitable for ELISA, immunohistochemistry and western blotting. Specific conditions for reactivity should be optimized by the end user. Expect a band



Anti-Pdcd4 Antibody -
Immunohistochemistry