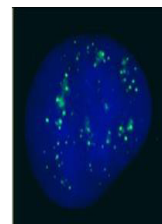


Product Datasheet

PC2 [RABBIT] Antibody GRP3441

Description	Anti-PC2 [RABBIT] Antibody
Species/Host	Rabbit
Reactivity	Human
Conjugation	Unconjugated
Tested Applications	ELISA, IF, IP, WB
Form/Appearance	0.02 M Potassium Phosphate, 0.15 M Sodium Chloride, pH 7.2
Concentration	1.36 mg/mL
Note	For research use only.
Isotype	IgG
Clonality	Polyclonal
Purity	This is an affinity purified antibody produced by immunoaffinity chromatography using the immunizing peptide after immobilization to a solid phase. Reactivity occurs against human PC2 protein.
Source	This affinity purified antibody was prepared from whole rabbit serum produced by repeated immunizations with a synthetic peptide corresponding to an internal region near aa 90-115 of Human PC2 protein.
Uniprot ID	O00257
Entrez	https://www.ncbi.nlm.nih.gov/gene//8535
Dilution Range	ELISA: 1:10,000 - 1:40,000, IF Microscopy: 1:100 - 1:400, Immunoprecipitation: 1:100, Western Blot: 1:1,000 - 1:4,000



Anti-hPC2 Antibody -
Immunofluorescence
Microscopy