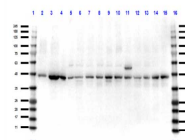


Product Datasheet

Pax7 (RABBIT) Antibody GRP3753

Description	Anti-Pax7 (RABBIT) Antibody
Species/Host	Rabbit
Reactivity	Human, Mouse
Conjugation	Unconjugated
Tested Applications	ELISA, WB
Form/Appearance	0.02 M Potassium Phosphate, 0.15 M Sodium Chloride, pH 7.2
Concentration	1.0 mg/ml
Note	For research use only.
Isotype	IgG
Clonality	Polyclonal
Source	Pax7 affinity purified antibody was prepared from whole rabbit serum produced by repeated immunizations with a synthetic peptide corresponding to an internal region of Pax7 protein.
Uniprot ID	P47239
Entrez	https://www.ncbi.nlm.nih.gov/gene/18509
Dilution Range	ELISA: 1:10,000-1:40:000, Western Blot: 1.0 ug/ml



Western blot for Anti-Pax7