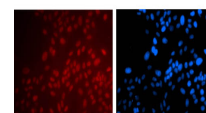


Product Datasheet

PAX6 (MOUSE) Monoclonal Antibody GRP2200

Description	Anti-PAX6 (MOUSE) Monoclonal Antibody
Species/Host	Mouse
Reactivity	Human
Conjugation	Unconjugated
Tested Applications	ELISA, IF, WB
Form/Appearance	0.02 M Potassium Phosphate, 0.15 M Sodium Chloride, pH 7.2
Concentration	1.0 mg/mL
Note	For research use only.
Isotype	IgG1
Clonality	Monoclonal
Purity	Anti-PAX6 was purified from clarified ascites by Protein A chromatography. Cross-reactivity with PAX6 from other sources has not been determined.
Source	PAX6 protein A purified antibody was prepared in mice by repeated immunizations with a recombinant protein corresponding to human PAX6 protein.
Clone ID	7H10.D3.D4.G5
Uniprot ID	P26367
Entrez	https://www.ncbi.nlm.nih.gov/gene//5080
Dilution Range	ELISA: 1:75,000 - 1:150,000, IF Microscopy: 1:100, Western Blot: 1:500 - 1:2,000



Immunofluorescence
Microscopy
of Mouse anti-PAX6
antibody.