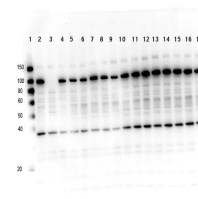


Product Datasheet

PARP1 (internal) (RABBIT) Antibody GRP2410

Description	Anti-PARP1 (internal) (RABBIT) Antibody
Species/Host	Rabbit
Reactivity	Human
Conjugation	Unconjugated
Tested Applications	WB
Form/Appearance	0.02 M Potassium Phosphate, 0.15 M Sodium Chloride, pH 7.2
Concentration	1.0 mg/ml
Note	For research use only.
Isotype	IgG
Clonality	Polyclonal
Source	PARP1 (internal) purified antibody was prepared from whole rabbit serum produced by repeated immunizations with c-terminus region of human PARP1 autocatalytic domain recombinant protein.
Uniprot ID	P09874
Entrez	https://www.ncbi.nlm.nih.gov/gene//142
Dilution Range	Western Blot: 1:1000



Western Blot of Rabbit anti-PARP1 multi lysate