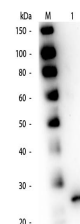


Product Datasheet

PAPAIN (GOAT) Antibody GRP1985

Description	Anti-PAPAIN (GOAT) Antibody
Species/Host	Goat
Reactivity	Plant
Conjugation	Unconjugated
Tested Applications	ELISA, IHC-P, WB
Form/Appearance	0.02 M Potassium Phosphate, 0.15 M Sodium Chloride, pH 7.2
Concentration	1.0 mg/ml
Note	For research use only.
Isotype	IgG
Clonality	Polyclonal
Source	Anti-Papain Antibody was produced by repeated immunizations with pork Papain protein isolated from papaya.
Uniprot ID	P00784
Dilution Range	ELISA: 1:10,000 - 1:50,000, Immunochemistry: 1:500 - 1:3,000, Western Blot: 1:1,000 - 1:5,000
Application Notes	Anti-Papain antibody is suitable for western blotting to detect a single band of the expected apparent molecular weight and for ELISA. Researchers should determine optimal titers for applications that are not stated below.



Papain Antibody - Western Blot