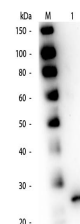


## Product Datasheet

### PAPAIN (GOAT) Antibody GRP1984

<b>Description</b>	Anti-PAPAIN (GOAT) Antibody
<b>Species/Host</b>	Goat
<b>Reactivity</b>	Plant
<b>Conjugation</b>	Unconjugated
<b>Tested Applications</b>	ELISA, IHC-P, WB
<b>Form/Appearance</b>	0.02 M Potassium Phosphate, 0.15 M Sodium Chloride, pH 7.2
<b>Concentration</b>	1.0 mg/ml
<b>Note</b>	For research use only.
<b>Isotype</b>	IgG
<b>Clonality</b>	Polyclonal
<b>Source</b>	Anti-Papain Antibody was produced by repeated immunizations with pork Papain protein isolated from papaya.
<b>Uniprot ID</b>	<b>P00784</b>
<b>Dilution Range</b>	ELISA: 1:10,000 - 1:50,000, Immunochemistry: 1:500 - 1:3,000, Western Blot: 1:1,000 - 1:5,000
<b>Application Notes</b>	Anti-Papain antibody is suitable for western blotting to detect a single band of the expected apparent molecular weight and for ELISA. Researchers should determine optimal titers for applications that are not stated below.



Papain Antibody - Western Blot