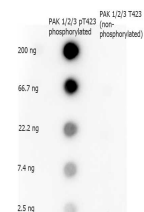


Product Datasheet

PAK 1/2/3 pT423 (RABBIT) Antibody GRP3397

Description	Anti-PAK 1/2/3 pT423 (RABBIT) Antibody
Species/Host	Rabbit
Reactivity	Human
Conjugation	Unconjugated
Tested Applications	ELISA, WB
Form/Appearance	0.02 M Potassium Phosphate, 0.15 M Sodium Chloride, pH 7.2
Concentration	1.0 mg/mL
Note	For research use only.
Isotype	IgG
Clonality	Polyclonal
Source	Human PAK 1/2/3 phospho peptide corresponding to a region of the human protein conjugated to Keyhole Limpet Hemocyanin (KLH).
Uniprot ID	Q13153
Entrez	https://www.ncbi.nlm.nih.gov/gene//5058
Dilution Range	ELISA: 1:4,000 - 1:20,000, Western Blot: 1:500 - 1:2,000



Rabbit anti-PAK 1/2/3
pT423 DB