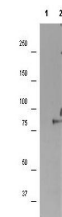


## Product Datasheet

### p90 RSK1 pS732 (RABBIT) Antibody GRP3671

<b>Description</b>	Anti-p90 RSK1 pS732 (RABBIT) Antibody
<b>Species/Host</b>	Rabbit
<b>Reactivity</b>	Human
<b>Conjugation</b>	Unconjugated
<b>Tested Applications</b>	ELISA, WB
<b>Form/Appearance</b>	0.02 M Potassium Phosphate, 0.15 M Sodium Chloride, pH 7.2
<b>Concentration</b>	1.51 mg/mL
<b>Note</b>	For research use only.
<b>Isotype</b>	IgG
<b>Clonality</b>	Polyclonal
<b>Source</b>	This affinity purified antibody was prepared from whole rabbit serum produced by repeated immunizations with a synthetic peptide corresponding to a region near the C-terminal end of human RSK1 protein.
<b>Uniprot ID</b>	<b>Q15418</b>
<b>Entrez</b>	<a href="https://www.ncbi.nlm.nih.gov/gene//6195">https://www.ncbi.nlm.nih.gov/gene//6195</a>
<b>Dilution Range</b>	ELISA: 1:5000-1:50,000,Western Blot: 1:1000-1:3000



Anti-p90 RSK1 pS732  
Antibody -  
Western Blot