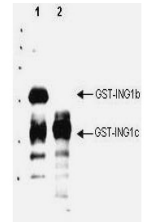


## Product Datasheet

### p33 ING1 (GOAT) Antibody GRP3272

<b>Description</b>	Anti-p33 ING1 (GOAT) Antibody
<b>Species/Host</b>	Goat
<b>Reactivity</b>	Human
<b>Conjugation</b>	Unconjugated
<b>Tested Applications</b>	ELISA, WB
<b>Form/Appearance</b>	0.02 M Potassium Phosphate, 0.15 M Sodium Chloride, pH 7.2
<b>Concentration</b>	1.0 mg/mL
<b>Note</b>	For research use only.
<b>Isotype</b>	IgG
<b>Clonality</b>	Polyclonal
<b>Source</b>	This affinity purified antibody was prepared from whole Goat serum produced by repeated immunizations with a synthetic peptide corresponding to an internal region near aa 275-300 of Human p33 ING1 protein (Inhibitor of growth family, member 1).
<b>Uniprot ID</b>	<b>Q9UK53</b>
<b>Entrez</b>	<a href="https://www.ncbi.nlm.nih.gov/gene//3621">https://www.ncbi.nlm.nih.gov/gene//3621</a>
<b>Dilution Range</b>	ELISA: 1:4,000 - 1:14,000, Western Blot: 1:500 - 1:3,000



Anti-p33 ING1 Antibody -  
Western Blot