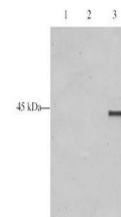


Product Datasheet

p28 ING5 (GOAT) Antibody GRP3275

Description	Anti-p28 ING5 (GOAT) Antibody
Species/Host	Goat
Reactivity	Human
Conjugation	Unconjugated
Tested Applications	ELISA, WB
Form/Appearance	0.02 M Potassium Phosphate, 0.15 M Sodium Chloride, pH 7.2
Concentration	1.52 mg/mL
Note	For research use only.
Isotype	IgG
Clonality	Polyclonal
Source	This affinity purified antibody was prepared from whole goat serum produced by repeated immunizations with a synthetic peptide corresponding to an internal region near aa 125-150 of Human p28 ING5 protein (Inhibitor of growth family, member 5).
Uniprot ID	Q8WYH8
Entrez	https://www.ncbi.nlm.nih.gov/gene//84289
Dilution Range	ELISA: 1:4,000 - 1:16,000, Western Blot: 1:500 - 1:1,000



Anti-p28 ING5 Antibody -
Western Blot