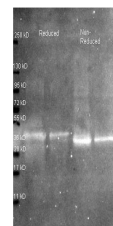


## Product Datasheet

# OVALBUMIN (Hen Egg White) (RABBIT) Antibody Biotin Conjugated GRP2628

<b>Description</b>	Anti-OVALBUMIN (Hen Egg White) (RABBIT) Antibody Biotin Conjugated
<b>Species/Host</b>	Rabbit
<b>Reactivity</b>	Chicken
<b>Conjugation</b>	Biotin
<b>Tested Applications</b>	ELISA, IP, WB
<b>Form/Appearance</b>	0.02 M Potassium Phosphate, 0.15 M Sodium Chloride, pH 7.2
<b>Concentration</b>	1.0 mg/mL
<b>Note</b>	For research use only.
<b>Isotype</b>	IgG
<b>Clonality</b>	Polyclonal
<b>Source</b>	Ovalbumin [Hen Egg White]
<b>Uniprot ID</b>	<b>P01012</b>
<b>Entrez</b>	<a href="https://www.ncbi.nlm.nih.gov/gene//396058">https://www.ncbi.nlm.nih.gov/gene//396058</a>
<b>Dilution Range</b>	ELISA: 1:5,000 - 1:25,000, Fluorochrome: 10-20, Immunoprecipitation: 1:100, Western Blot: 1:1,000 - 1:5,000



Anti Ovalbumin Polyclonal Antibody- Western Blot