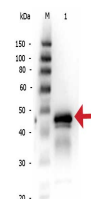


Product Datasheet

OVALBUMIN (Hen Egg White) (RABBIT) Antibody GRP2255

Description	Anti-OVALBUMIN (Hen Egg White) (RABBIT) Antibody
Species/Host	Rabbit
Reactivity	Chicken
Conjugation	Unconjugated
Tested Applications	ELISA, IHC-P, IP, WB
Form/Appearance	0.02 M Potassium Phosphate, 0.15 M Sodium Chloride, pH 7.2
Concentration	1.0 mg/ml
Note	For research use only.
Isotype	IgG
Clonality	Polyclonal
Source	Ovalbumin [Hen Egg White]
Uniprot ID	P01012
Entrez	https://www.ncbi.nlm.nih.gov/gene//396058
Dilution Range	ELISA: 1:5,000 - 1:20,000, Immunochemistry: 1:300 - 1:2,000, Immunoprecipitation: 1:100, Western Blot: 1:500 - 1:2,000
Application Notes	Anti-Ovalbumin Antibody has been tested in ELISA and Western Blot. Although not tested this product could be useful in assays such as IHC and IP. Specific conditions for reactivity and signal detection should be optimized by the end user.



Rabbit anti-OVALBUMIN
Antibody
WB