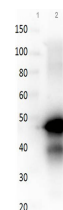


Product Datasheet

OVALBUMIN (Hen Egg White) (RABBIT) Antibody GRP1621

Species/Host	Rabbit
Reactivity	Chicken
Conjugation	Unconjugated
Tested Applications	ELISA, IP, WB
Form/Appearance	0.02 M Potassium Phosphate, 0.15 M Sodium Chloride, pH 7.2
Concentration	80 mg/mL
Note	For research use only.
Isotype	Antiserum
Clonality	Polyclonal
Source	Ovalbumin [Hen Egg White] Anti-Ovalbumin Antibody was produced by repeated immunizations with hen egg white Ovalbumin protein.
Uniprot ID	P01012
Entrez	https://www.ncbi.nlm.nih.gov/gene//396058
Dilution Range	ELISA: 1:5,000 - 1:20,000, Immunoprecipitation: 1:100, Western Blot: 1:500 - 1:5,000
Application Notes	Anti-ovalbumin Antibody is suitable for western blotting, ELISA and IP. Researchers should determine optimal titers for applications that are not stated below.



Rabbit anti-OVALBUMIN
Antibody
WB