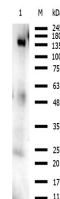


## Product Datasheet

### Orf2 (RABBIT) Antibody GRP3758

<b>Description</b>	Anti-Orf2 (RABBIT) Antibody
<b>Species/Host</b>	Rabbit
<b>Reactivity</b>	Mouse
<b>Conjugation</b>	Unconjugated
<b>Tested Applications</b>	ELISA, WB
<b>Form/Appearance</b>	0.02 M Potassium Phosphate, 0.15 M Sodium Chloride, pH 7.2
<b>Concentration</b>	1.07 mg/mL
<b>Note</b>	For research use only.
<b>Isotype</b>	IgG
<b>Clonality</b>	Polyclonal
<b>Source</b>	Affinity purified Anti-ORF2 antibody was prepared from whole rabbit serum produced by repeated immunizations with a synthetic peptide near the c-terminus of mouse ORF2 protein.
<b>Uniprot ID</b>	<b>2731767</b>
<b>Dilution Range</b>	ELISA: 1:50,000-1:150,000, Western Blot: 1.0 ug/mL



Western blot of Anti-Orf2  
Antibody