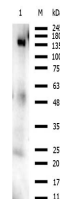


Product Datasheet

Orf2 (RABBIT) Antibody GRP3757

Description	Anti-Orf2 (RABBIT) Antibody
Species/Host	Rabbit
Reactivity	Mouse
Conjugation	Unconjugated
Tested Applications	ELISA, WB
Form/Appearance	0.02 M Potassium Phosphate, 0.15 M Sodium Chloride, pH 7.2
Concentration	1.07 mg/mL
Note	For research use only.
Isotype	IgG
Clonality	Polyclonal
Source	Affinity purified Anti-ORF2 antibody was prepared from whole rabbit serum produced by repeated immunizations with a synthetic peptide near the c-terminus of mouse ORF2 protein.
Uniprot ID	2731767
Dilution Range	ELISA: 1.0 ug/ul, Western Blot: 1.0 ug/ml



Western blot of Anti-Orf2 Antibody