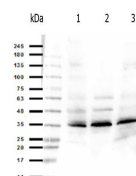


## Product Datasheet

### ORAI1 (RABBIT) Antibody GRP1620

<b>Species/Host</b>	Rabbit
<b>Reactivity</b>	Human
<b>Conjugation</b>	Unconjugated
<b>Tested Applications</b>	WB
<b>Form/Appearance</b>	0.01 M Sodium Phosphate, 0.15 M Sodium Chloride, pH 7.2
<b>Concentration</b>	45 mg/mL
<b>Note</b>	For research use only.
<b>Isotype</b>	IgG
<b>Clonality</b>	Polyclonal
<b>Source</b>	This whole rabbit serum was prepared by repeated immunizations with a recombinant fusion protein.
<b>Uniprot ID</b>	<b>Q96D31</b>
<b>Dilution Range</b>	Western Blot: 1:1000
<b>Application Notes</b>	Anti-ORAI-1 has been tested for use in western blotting. Specific conditions for reactivity should be optimized by the end user. Expect bands approximately 32.7 kDa by western blotting in the appropriate cell lysate or extract.



Western blot of  
Anti-ORAI-1  
Antibody